

PURAVANKARA®

PURVA
ATMOSPHERE
THE CHOSEN WORLD

Puravankara Limited, 130/1, Ulsoor Road, Bangalore - 560042

The Image used are only indicative   CREDAI

Call: +91 - 80- 44 55 55 55 / 18602080000 Web: www.puravankara.com Mail: sales@puravankara.com

SCAN THE QR CODE



thoughttrains

The images used in the brochure is indicative of style only. The photographs of the interiors, surrounding views and location may have been digitally enhanced or altered and do not represent actual or surrounding views. Standard fittings and finishes are subject to availability and vendor discretion. The images shown in the brochure are not standard and will not be provided as a part of an apartment. The information contained herein is believed to be true but not guaranteed. The colors of the buildings are indicative. This is a reference document intended only to provide generic information and does not constitute an offer or contract. PRM/KA/RERA/1251/472/PR/190204/002350. For details, Visit <https://rera.karnataka.gov.in>
Project Finance by HDFC Bank LTD.

PRM/KA/RERA/1251/472/PR/190204/002350 | For details, Visit <https://rera.karnataka.gov.in/>

**UNABASHEDLY
SUPERIOR.
UNCOMPROMISINGLY
EXCELLENT.**



Images of the interiors surround views and locations may have been digitally altered and do not represent actual views or surrounding views , No photos have been shot at site

PURAVANKARA®



WORLDHOME
COLLECTION

WorldHome Collection is a holistic perspective to life-spaces in providing conducive, healthy, smart and luxurious living experiences under a unique brand name. Envisioned by the industry stalwarts, the concept is to provide an ecosystem where design, nature, technology, intelligence and handpicked luxuries from the world over, are curated with utmost care to build experiences that enable every resident to cherish an integrated lifestyle. Adding to the evolving lifestyle is a name of trust, Puravankara that has a proven track record of delivering quality lifestyle for more than 4 decades. When the world is open to experiences, so should your home.

ENVISAGING THE HOMES OF THE FUTURE

6 TENETS THAT MAKE IT A WORLDHOME



PARTNERING WITH THE BEST

Right from Internationally acclaimed architects, interior designers, landscape planners and brands of significance and salience are brought into the WorldHome, to make it a masterpiece.



INTEGRATED PLANNING

Every WorldHome Collection project will begin with an integrated planning process, where every aspect of fine living is foreseen, taking health, wellness, technology and indulgences into the consideration.



SUSTAINABILITY AND ENVIRONMENT CONSCIOUSNESS

Demarcated greens, oxygen emanating plants and sensory experiences go hand in hand with practices involving a sustainable environment.



EXPERIENCES BEYOND AMENITIES

Every amenity space is crafted keeping in mind the experience that it will deliver and thus planned with utmost care and perfection.



ELITE-LUXURY AND CRAFTSMANSHIP

Luxury is a matter of superior choices that should reflect in every walk of the project. A grand entrance, impeccable designs, branded fittings; floorings and finishes take the top-notch importance to mark a sense of arrival.



TECHNOLOGY FOR AN INTEGRATED LIVING

Much beyond home automation goes in designing a home that lives and breathes with you. Thus the best of globally acclaimed technology partners bring in evolved - integrated features and facilities.




Image is an artistic representation of Purva Atmosphere and its surroundings. No photos have been shot at site

PURVA
ATMOSPHERE
—
THE CHOSEN WORLD

Spread over a sprawling 13 acres of lush greenery along with 9 acres openspace - Purva Atmosphere is a bold, ultra-modern, ultra-luxurious residential project. Sleek, minimalistic and contemporary, it's been thoughtfully designed to offer abundant natural light and ventilation at every level. Our project is smartly distant from the main roads to keep off sound and pollution, yet close to everything you need. Purva Atmosphere is far more than just a luxurious, world-class living space in North Bangalore.

PRESENTING THE FIRST IN THE WORLDHOME COLLECTION


PURVA
ATMOSPHERE
—
THE CHOSEN WORLD

2, 3 & 4 BHK LUXURY RESIDENCES, NEAR MANYATA TECH PARK, NORTH BANGALORE.

PRM/KA/RERA/1251/472/PR/190204/002350 | For details, Visit <https://rera.karnataka.gov.in/>

**CURATED
EXPERIENCES,
AT A CANVAS
CALLED HOME.**



GLOBAL BRILLIANCE
FROM THE MASTERS OF CRAFT



VERDANT NATURE
AN ABUNDANT & HEALTHY LIFE



NEW-AGE TECHNOLOGY
AN INTEGRATED LIVING EXPERIENCE



TOPNOTCH LUXURY
A CUT ABOVE THE REST



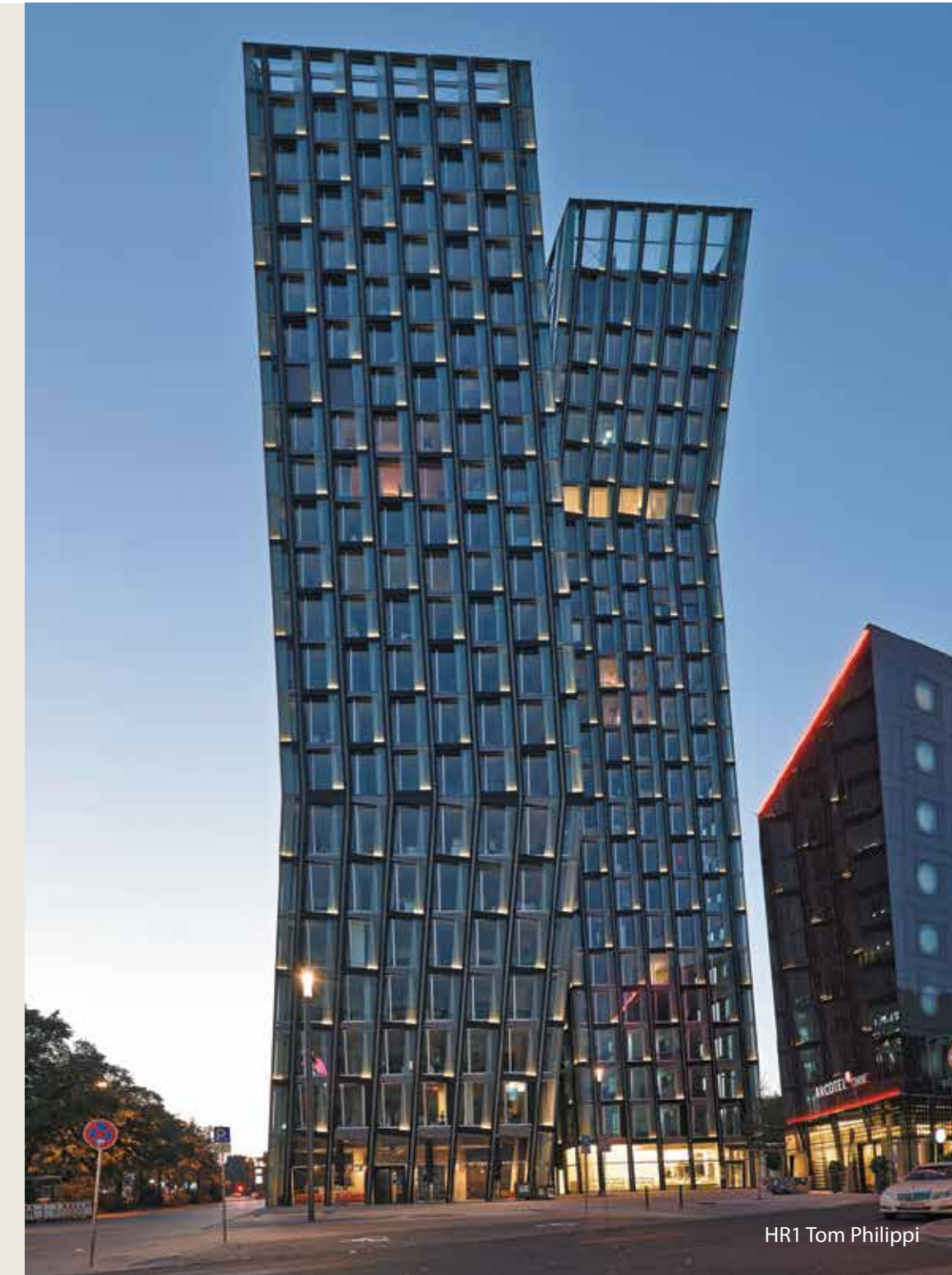
**AN ICON OF EXCELLENCE
MUCH MORE THAN
A LANDMARK**

SKILFULLY CRAFTED BY A GLOBALLY ACCLAIMED ARCHITECT - HADI TEHERANI



In the words of Iranian-German architect Hadi Teherani, 'Atmosphere is an ultra-modern, bold and luxurious residential project.' He has been honoured with international acclaims like FIABCI Award, MIPIM Awards, LEAF Award, CityScape Award and ARX Award. Being a global thought leader in design and architecture, he believes in exceeding boundaries. The same principle has been used effectively while designing Purva Atmosphere. Here is not just a home but an icon to boast.

Images of the interiors surround views and locations may have been digitally altered and do not represent actual views or surrounding views , No photos have been shot at site



HR1 Tom Philippi



OAK Eingang



Crane Houses - Germany



**AN EXCLUSIVE
OPULENCE FOR
THE SELECTED FEW.
MUCH MORE THAN COMFORTS.**

CHOICEST OF INDULGENCES FOR THOSE WHO CHOOSE NOTHING BUT THE FINEST

Welcome to a place where, everything is crafted to deliver top-notch luxuries. Unwind in Oxygenated clubhouse - Altura, at the 34th floor, where breathtaking vistas will enthrall you and a select smart air purifier fills you up with freshness. It's an incredible project that offers unique amenities and majestic skydeck (AIR) for the mind to wander. Every sundown provides you an opportunity to plunge into opulence and immerse your soul in tranquility.

Photos of surroundings or location have been digitally enhanced unless otherwise mentioned. Images of facilities and amenities have not been shot on site and do not represent the actual facilities and amenities to be provided. The clubhouse is supplied with fresh air with optimized oxygen content



Oxygenated Clubhouse Altura at 34th floor



Swimming Pool



Festival Plaza

- _____
- Lobby/Reception
- _____
- Multipurpose hall
- _____
- Viewing Gallery
- _____
- Gymnasium
- _____
- Yoga/Aerobics Room
- _____
- Games Room -Cards, Table Tennis, Carom & Chess
- _____
- Café'
- _____
- Squash court
- _____

Photos of surroundings or location have been digitally enhanced unless otherwise mentioned.
Images of facilities and amenities have not been shot on site and do not represent the actual facilities and amenities to be provided

TOWERING HIGH IN THE SKY, TO INFUSE FRESHNESS IN LIVES!

With an one of a kind 40' Air Filtration Tower, residents will be blessed with the cleanest of air. Purifying the air up to a radius of 3 km, the tower will discharge 1.3 million cubic metres of clean air, also benefiting the neighbourhood around.

Photos of surroundings or location have been digitally enhanced unless otherwise mentioned. Images of facilities and amenities have not been shot on site and do not represent the actual facilities and amenities to be provided.



One-of-a-kind Air Filtration Tower (The Aerosphere)

THE ELIXIR OF LIFE IS JUST A TAP AWAY

It is said that pure water is the world's first and foremost medicine. We have proficiently brought together three state-of-the-art technologies - UF, and UV to ensure you consume cleanest of water right off your kitchen tap. Thoughtfully planned to save your time, these backend water purification processes leave more space in kitchen to marinate your moments.

Photographs of interior surroundings or location are digitally enhanced unless otherwise mentioned. No photos have been shot on site. Users will need to be aware that water may get contaminated even after its output from the tap by way of human contact, contaminated holding vessels, etc. The filtration mechanism that is common to the entire building also needs periodic maintenance/replacement by the Association of Owners , As per the manufacturers user manual failing which the water quality shall deteriorate



Off the tap pure drinking water | Triple purification with UF and UV

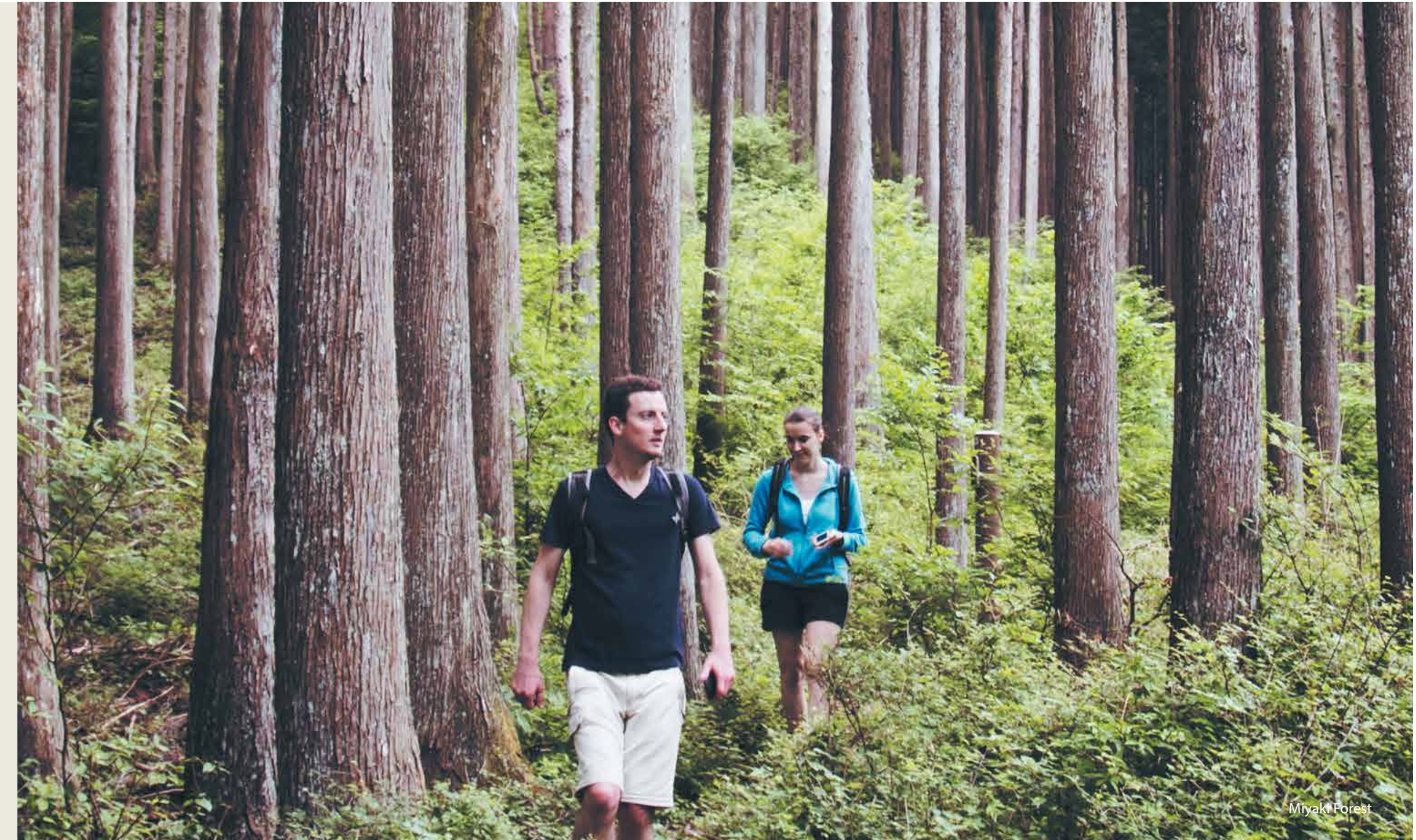


**SOUGHT-AFTER
DELIGHTS WITH BEST OF
URBAN LIVING.
MUCH MORE THAN A PRIVILEGE.**

LET THE SWISHING FOREST BANTER SECRETS OF ITS EVERGREEN BLISS

It is said that nature is not a place to visit. It is home. Standing protectively between Purva Atmosphere's majestic towers and the world outside will be a beautiful forest. Thoughtfully planed with unique Japanese technique - Miyawaki Forest, will have 75 species of carefully curated trees which includes - The Aroma trees, Medicinal trees, Fruit and Flower bearing trees According to this new method trees grow 10 times faster, providing 30 times more green surface area. Being 100% organic, Miyawaki provides soothing ambiance.

Photos of surroundings or location have been digitally enhanced unless otherwise mentioned. Images of facilities and amenities have not been shot on site and do not represent the actual facilities and amenities to be provided



Miyaki Forest

Japanese tree plantation method | 75 species of trees | Ample green cover | Soothing ambiance

A HABITAT WHERE YOUR CALLINGS ARE ANSWERED

When was the last time your callings were answered and every wish came true? Well, here's a place that talks heart to heart with 5 different mediums. A beautifully curated Garden of 5 Senses is getting ready to communicate with you through touch, smell, hear, see and taste. The trees here will complement each other in terms of nutrients and support an entire eco-system of birds and insects. This will include medicinal, fruit bearing, flower bearing, scented and decorative trees. Close your eyes and meditate or open your heart to the world outside, choice is truly yours.

Photos of surroundings or location have been digitally enhanced unless otherwise mentioned. Images of facilities and amenities have not been shot on site and do not represent the actual facilities and amenities to be provided



Buddha Statue



Meditation Zone



Sensory Garden

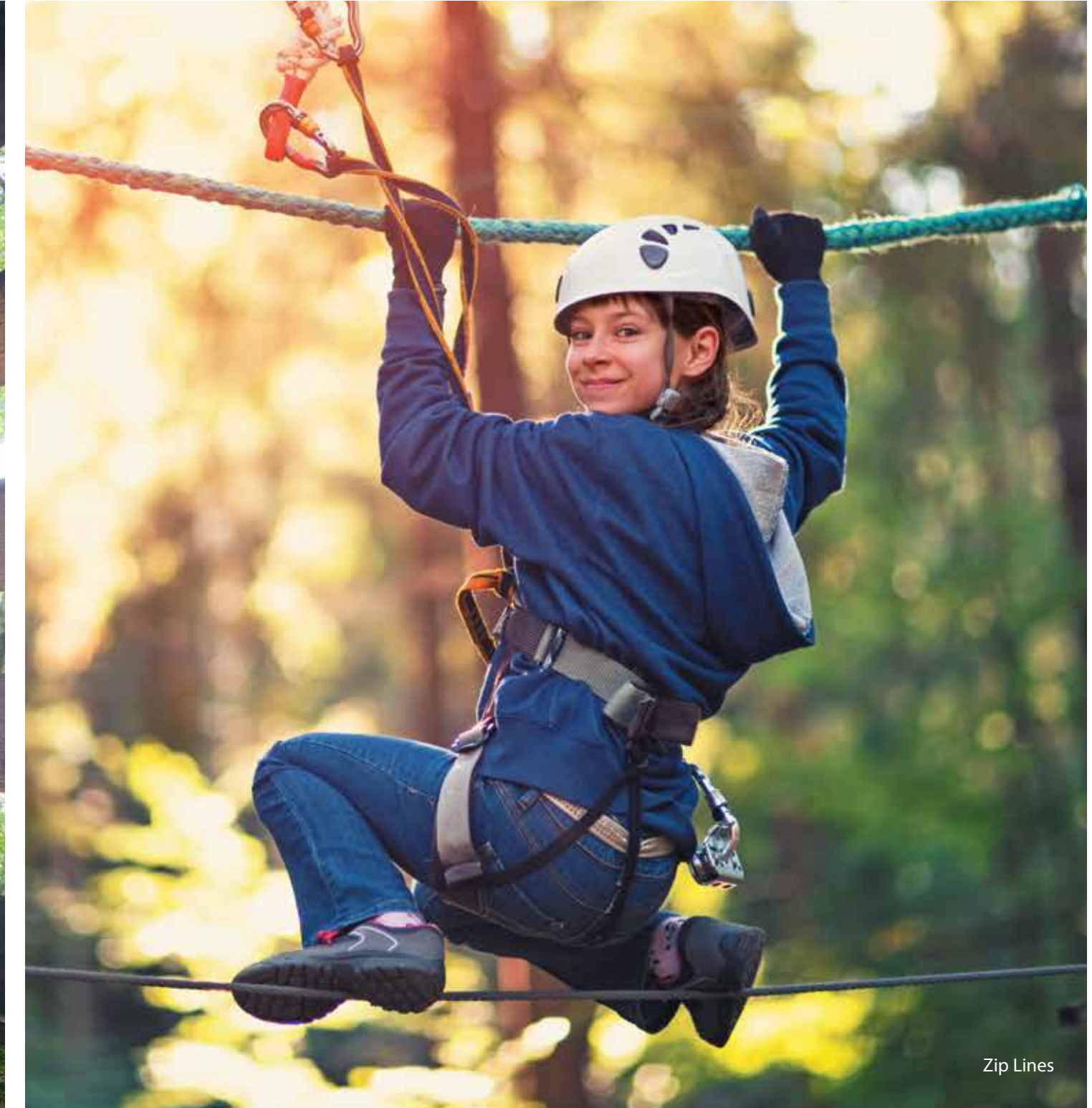
A CANVAS OF HAPPINESS TO EXPLORE EVERY MOMENT

Gift your kids a childhood they will always remember. Let your small wonders grow at an exciting place that introduces them to the miracles of nature living. With tunnels, zip lines, skywalks, treehouse, and adventure avenues, here's a world that will teach your kids the perks of being offline.

The User Interface on the BluNex app and home automation devices for the unit provided home may change with time. Requires WI-FI, a nearby electrical outlet and compatible devices. Images of the interiors surround views and locations may have been digitally altered and do not represent actual views or surrounding views , No photos have been shot at site



Tunnel



Zip Lines



**AN AVANT-GARDE
INNOVATION TO STEP
INTO TOMORROW.
MUCH MORE THAN AN UPDATE.**

THE CUTTING-EDGE TECHNOLOGY TO LIVE THE NEXT

If change is only constant then why your home should be static? Here's a home with all-new BluNex® Technology that understands you and adapts accordingly. With a fine blend of cutting-edge technology and easy-to-use innovations, your smart home welcomes you to step into the future. Securing your life and simplifying your daily chores, this is the most user-friendly technology which can be used by anyone.

The User Interface on the BluNex app and home automation devices for the unit provided home may change with time. Requires WI-FI, a nearby electrical outlet and compatible devices. Images of the interiors surround views and locations may have been digitally altered and do not represent actual views or surrounding views , No photos have been shot at site



Intelligent homes powered with BluNex® Technology



The User Interface on the BLuNex app and home automation devices for the unit provided home may change with time. Requires Wi-Fi, a nearby electrical outlet and compatible devices. Images of the interiors surround views and locations may have been digitally altered and do not represent actual views or surrounding views. No photos have been shot at site

Mobile App Enabled Home Automation

High-Tech Main Door Security System

Biometric Main Door Lock

Multiple Lighting & Cooling Settings

Voice Enabled Help

Hands free Music Device

Google Chrome Cast

Hands Free Master Switch

Pre-programmed Morning Settings

Automated Security Features

Wi-Fi Boosters, Intelligent Curtain control,
Gas Detector, Sensor Lights in Corridor



**A RESIDENCE WHERE
BLISS OF LIVING MEETS
BEST OF COMFORTS.**

PAMPERING YOUR BODY, MIND & SOUL, INSIDE OUT.

Your new home at Purva Atmosphere comes with a space which engulfs you with happiness. Soaking everyone's body, mind and soul with bliss, your home lets you keep your worries at bay. Every residence has a fine blend of bold lines and minimalistic outlook. Thoughtfully planned to use natural light & ventilation, sustainable practices here have reached a new epitome of excellence.



Living Room for representational purpose

Interiors, Fixtures and fittings will be provided as per specifications. Images of the interiors surround views and locations may have been digitally altered and do not represent actual views or surrounding views, No photos have been shot at site



Master Bedroom for representational purpose

Interiors, Fixtures and fittings will be provided as per specifications. Images of the interiors surround views and locations may have been digitally altered and do not represent actual views or surrounding views, No photos have been shot at site. Furniture and electronics will not be provided as part of the unit



Bedroom for representational purpose



Dining Area for representational purpose

Interiors, Fixtures and fittings will be provided as per specifications. Images of the interiors surround views and locations may have been digitally altered and do not represent actual views or surrounding views, No photos have been shot at site Furniture, Fixtures, electronics and fittings shown are not standard and will not be provided in the apartment.



Kitchen for representational purpose

YOUR WORLDHOME COMES WITH WORLD-CLASS AMENITIES

- Viewing Gallery As Per Design In Selective Places
- Lobby / Reception
- Gymnasium
- Yoga / Aerobics
- Games Room – Cards, Carom & Chess
- Café
- Squash Court
- Swimming Pool Including Toddler's Pool
- Associated With Shower, Change Room & Steam Room
- Crèche
- Car Wash Point
- Car Charging Point
- Drivers & Disabled Toilet (1 Per Tower)
- Children's Play Area
- 2 Outdoor Tennis Courts (for practice only)
- Open Air Gym
- Half Basket Ball Court
- Festival Plaza
- Pet Park
- Yoga Deck
- Tree Court

Photos of surroundings or location have been digitally enhanced unless otherwise mentioned.
Images of facilities and amenities have not been shot on site and do not represent the actual facilities and amenities to be provided



MASTER PLAN OF THE PROJECT



LEGEND

- | | |
|-----------------------------|--|
| 1. ENTRY/EXIT | 21. AROMA GARDEN |
| 2. DRIVEWAY | 22. HALF BASKETBALL COURT |
| 3. SURFACE PARKING | 23. CHILDREN'S PLAY AREA |
| 4. DESTINATION SPACE | 24. PERGOLA WITH WATER BODY |
| 5. DECK | 25. ADVENTURE PARK |
| 6. PEDESTRIAN WALK | 26. MINI FOREST SETTING WITH DECKS |
| 7. TENNIS COURT | 27. KIDS POOL |
| 8. SPORTS SPHERE | 28. PERGOLA WITH SEATER |
| 9. ARRIVAL PLAZA | 29. SERVICES |
| 10. TREE COURT | 30. OPEN TO SKY GRAVEL COURT |
| 11. ENTRANCE TO PODIUM | 31. SENIOR CITIZEN COURT |
| 12. WET WALL | 32. YOGA DECK WITH LAWN |
| 13. SWIMMING POOL WITH DECK | 33. EXPERIENCE WALKING TRAIL |
| 14. ENTRANCE TO TOWERS | 34. SECURITY KIOSK |
| 15. FESTIVAL PLAZA | 35. TREE HOUSE |
| 16. BONFIRE AREA | 36. TEMPLE OF BODY & SOUL (SENSORY GARDEN) |
| 17. PET PARK | 37. NATURAL TRAIL |
| 18. COMMUNITY GARDEN | 38. AIR PURIFICATION TOWER |
| 19. OPEN AIR GYM | 39. CAMPING AREA |
| 20. CRICKET PRACTICE PITCH | |

master plan is an indicative digital rendering of all phases/paths of the project post completion

A WORLD WHERE LIFE IS BUILT AROUND YOU

google co ordinates 13°03'52.7"N, 77°38'01.3"E



SCHOOLS

Stonehill International School | Embassy International Riding School
Delhi Public school | Jain Heritage School | Legacy School
Kensri Academy | Vidyashilp Academy | Vidya Niketan School



COLLEGES

Presidency College | Reva University
CMR College | KNS Institute of Technology



HOSPITALS

Aster CMI | Baptist Hospital | Columbia Asia
Cloudnine Asia | Motherhood Hospital



SHOPPING MALLS

RMZ Galleria | Elements mall | Esteem Mall
Orion East Mall | Garuda Central



HOTELS

Courtyard By Marriott | Howard Johnson Bengaluru
Clarks Exotica | Angsana Oasis Spa & resorts | Leela Hotels

PURAVANKARA®

**THERE ARE THINGS
WHICH WE LOVE DOING -
REACHING HEIGHTS &
CROSSING MILESTONES**

Putting people first is at the heart of what Puravankara does. With over 45 years in real estate, Puravankara stands tall as one of the top 4 developers in India. A credo of uncompromising values, customer centricity, robust engineering, and transparent business operations, has earned the company many an accolade from both customers and the public at large. Popular for its unique conceptualizing sensibilities, Puravankara is not just exploring exciting theme-based projects but also adapting and executing bold new living concepts. Not surprisingly, today Puravankara has 45,000 happy families.

