

PURAVANKARA

**PURVA
ASPIRE**

📍 **BAVDHAN, PUNE**

Lifestyle>>



LIVE GREEN. LIVE INTELLIGENT.

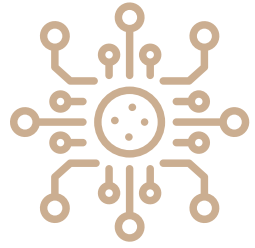
Nestled at the foothills of pristine NDA hills, is your home built with the perfect blend of everything futuristic - location, design, technology, as well as world-class fixtures and fittings. Located in Bavdhan, one of the most sought after locations in Pune, Purva Aspire offers new age contemporary architecture. In these one-of-its-kind intelligent homes you have control over the lighting, temperature, security, entertainment, as well as your music choices, via the BluNex™ Life App on your smart phone. Some gadgets are voice controlled via Google Home device for hands-free operation. In fact, now you can even drink water straight off the kitchen tap, and enjoy more oxygen while at the clubhouse.



*Requires Wi-Fi, a nearby electrical outlet and compatible devices. Home Automation package comes with a Google Home device. Kindly read the terms, conditions & relevant disclaimers pertaining to BluNex™ Life Package, mentioned in the penultimate page of this brochure. Google and Google Home are trademarks of Google LLC.



This image is an artists rendering of the project and surrounding views, and does not represent actual views or appearance/facade of the project once complete. No photos have been shot at site.



Live New Age >>



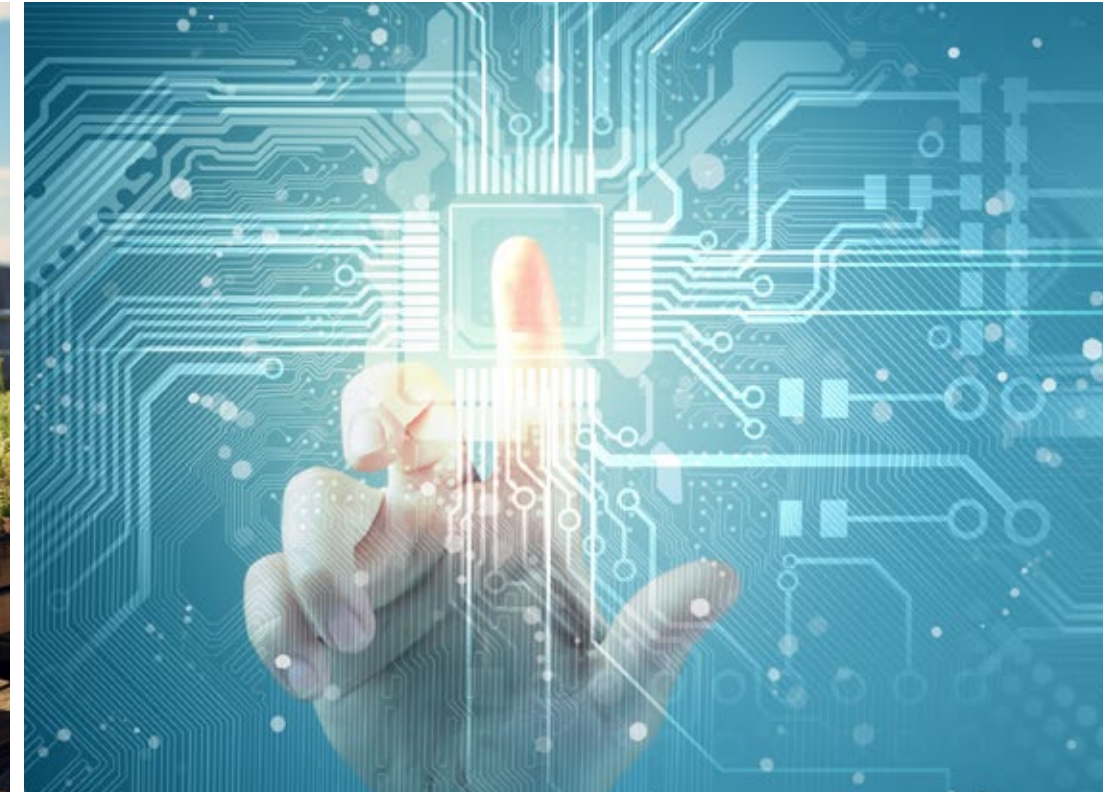
HIGH-GROWTH LOCATION

Bavdhan, Pune



CONTEMPORARY DESIGN

2 & 3 BHK Homes with Twin Living



FUTURISTIC HOMES

India's First Fully Integrated Intelligent Homes

START LIVING
TOMORROW
TODAY

<<High-Growth Location

BAVDHAN – ONE OF THE FASTEST GROWING SUBURBS OF PUNE.

DEVELOPMENTS THAT ARE FUELLING GROWTH IN THE AREA.



Metro

Line 2 of metro will connect Chandani Chowk in West to Ramwadi in East and connect Bavdhan to prominent locations like Koregaon Park, Kalyani Nagar and Viman Nagar. Vanaz to Ramwadi Route is already functional.

Mumbai-Pune-Bangalore Highway

The Mumbai-Pune-Bangalore highway NH 48 is just 5 mins away and offers easy access to all parts of Pune city

Pune Ring Road

The proposed 128 km Pune Ring Road planned by the Pune Metropolitan Region Development Authority will connect Bavdhan to Katraj-Kondhwa in South, Ranjangaon in East, and Chakan in North.



SEZ

Hinjewadi IT Park, Lohia - Jain IT Park, Oracle, Calsoft, Fundtech, Prabhatee Tech Park, Nano Space IT Park, and Pune IT Park are some of the SEZs spurring real estate growth in this area. Teerth Technospace, Balewadi High Street, Cummins before Prabhatee,



Office Spaces

Over 40 lakh sq. ft. of construction in Aundh, Baner and Balewadi have opened up nearly 40,000 job opportunities.



Mall

Phoenix Mall Of the Millennium, Wakad, Grand Highstreet Mall, Hinjewadi, Pavilion Mall, SB Road, Westend Mall and Aundh, all within 20-30 mins of drive





<<Contemporary Design

INTRODUCING TWIN LIVING

Presenting a unique idea in living spaces- a combination of twin living rooms; an indoor living room and an outdoor lounge. Play with your imagination and use the outdoor lounge *in myriad ways. A vibrant party place, a pet area, a snazzy bar, a calm meditation zone, a zen garden, the possibilities are simply endless.

This image is an artists rendering of the project and surrounding views, and does not represent actual views or appearance/facade of the project once complete. No photos have been shot at site.

Photographs of interiors, surrounding or locations are digitally enhanced unless otherwise mentioned. Images of Facilities and Amenities have not been shot at site and do not represent photos of actual amenities to be provided.

FEEL SPOILT FOR CHOICE

Pamper yourself like never before, come home to Purva Aspire- an ideal home for the discerning few like you.

Nestled in the pristine foothills, you can enjoy an array of amenities like a swimming pool, a yoga pavilion and a serene central courtyard lined by exotic greens. Yes! It's anything but ordinary.





SOAK IN ABSOLUTE COMFORT INDULGE WITH YOUR FRIENDS

Unwind one lap at a time, uplift your mood at the touch of a button, feel serene overlooking those refreshing greens, Indulge with your friends* at the impressive clubhouse. Like we said, there's no better detox than living at Purva Aspire.

This image is an artists rendering of the project, internal views from balconies, and surrounding views, and does not represent actual views or appearance/facade of the project once complete. No photos have been shot at site.

Photographs of interiors, surrounding or locations are digitally enhanced unless otherwise mentioned. Images of Facilities and Amenities have not been shot at site and do not represent photos of actual amenities to be provided.

BluNex™ Life>>



BLUNEX™ LIFE-TOMORROW'S TECHNOLOGY TODAY.

Introducing BluNex™ Life, the next generation of intelligent homes. Put together by some of the best technical talent in the country, using Artificial Intelligence solutions and Internet of Things (IOT) to transform the way you live. This makes Purva Aspire a fully integrated lifestyle with everything required to make your life comfortable.

Purva Aspire is the perfect futuristic next generation investment choice, one that brings you the best of both worlds, with a mix of architecture and technology. Each home comes with unique BluNex™ Life offerings such as – Pure Drinking Water off the Tap, Pure Oxygen Zone (Clubhouse) and Intelligent Homes. With BluNex™ Life, you can control your home via an App on your smart phone or through Google Home¹ which can give you hands-free help around the house. Google Home¹ is powered by the Google Assistant. Ask it questions. Tell it to do things. It's your own Google, always ready to help. Just start by saying, "Ok Google" to get answers from Google, enjoy music, manage your everyday tasks, and easily control your smart home.

HOMES WITH

BluNex™ Life™
TOMORROW'S TECHNOLOGY TODAY

Pure Drinking Water off the Tap

Pure Oxygen Zone (Clubhouse)

Intelligent Homes



Installing a water purifier is a thing of the past. At Purva Aspire, we've made it possible for you to drink purified water straight off the kitchen tap. Processed through a centralised treatment plant, the water is filtered numerous times with sediment filters and activated carbon filters, so you enjoy the purest access to high quality drinking water.

PURIFIED WATER,
STRAIGHT OFF
YOUR KITCHEN TAP.



INTRODUCING
WATER EFFICIENT
HOMES, FOR A
CLEANER, GREENER
TOMORROW.



At Puravankara, we take pride in being a responsible corporate and taking care of our planet. And as a step towards this we recognize the importance of saving water. That is why we have taken every effort to make every single project of our's water efficient.

Our initiative is a 3-step process which includes:



Water Harvesting

It's our way of giving back to Mother Earth what we take from her. We achieve this through a simple process of collecting and storing rainwater into storage tanks. Treating it and then making it available for domestic use. We also direct the excess water to the ground through recharge pits, thus making it possible to recharge and increase the groundwater level as well.



Water Purification

Designed to keep your health and well-being in check. We at Puravankara, ensure safe and purified drinking water in your kitchen tap, through a rather rigorous treatment process. No matter what your water source is, be it Borewell/Tanker/Municipal/Panchayat water, it goes through multiple levels of treatment as well as filtration before it is made available in your kitchen tap, for you to drink straight off the tap. This way, you and your loved ones stay healthy always.



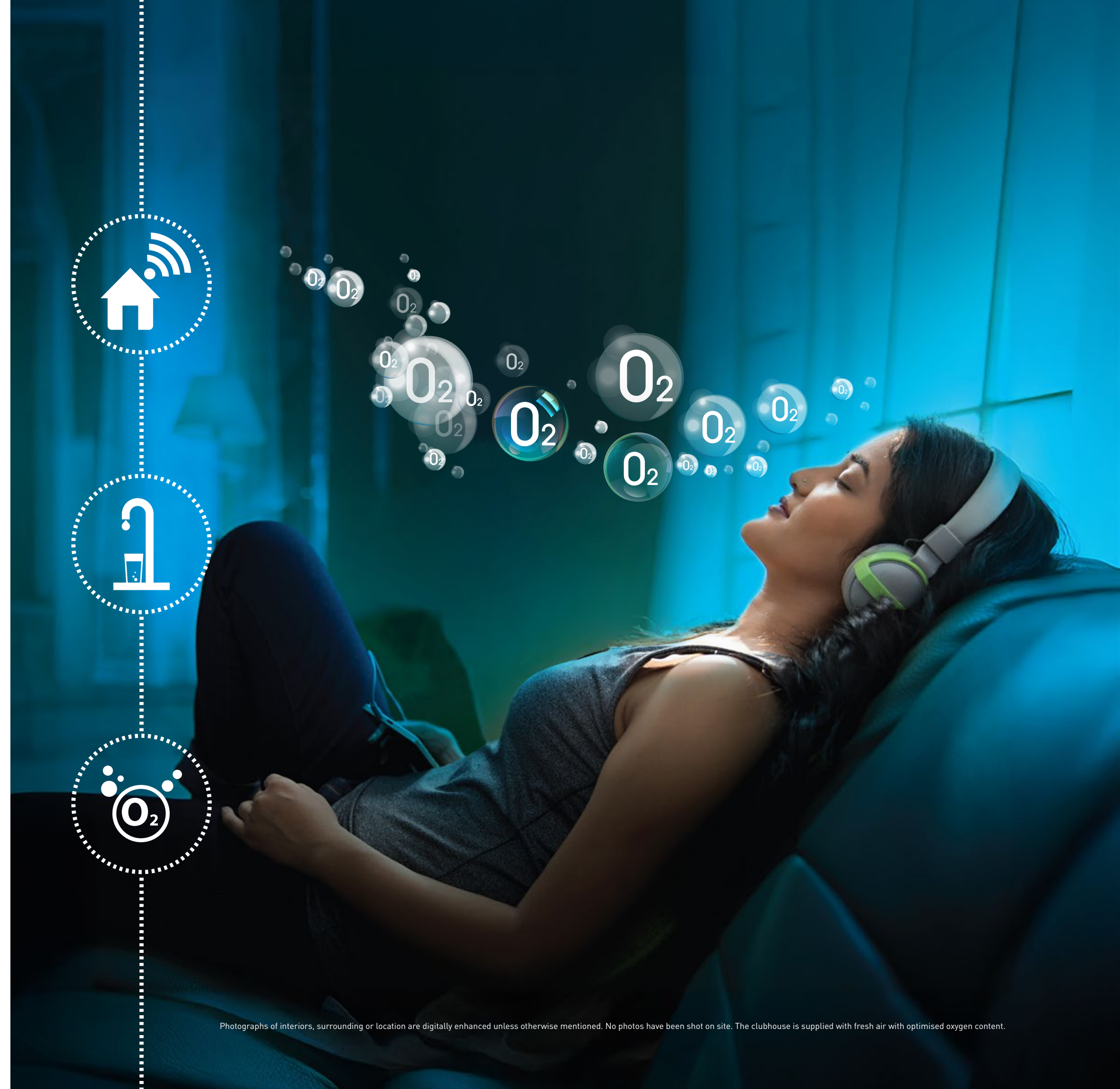
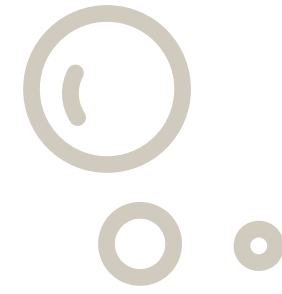
Water Recycling

Every drop of water used in a home, can be treated and used again. In fact, our Sewage Treatment Plant, is especially designed to treat waste water (both grey & black water). Once the waste water has been treated through STP (MBR technology), it is then collected in a separate water tank and pumped for flushing and gardening. This not only makes us self-sufficient, but also ensures we play our part in keeping our planet green.

Pure Oxygen Zone (Clubhouse)

Purva Aspire brings you access to an Oxygen Club located within the clubhouse, offering a room with fresh oxygen to rejuvenate and re-vitalize your mind, body, and soul. The Oxygen Club is designed specifically to de-stress you.

FOR THE FIRST TIME
EVER, PRESENTING
THE OXYGEN CLUB.





YOUR INTELLIGENT HOME TAKES CARE OF YOUR EVERY NEED

Your home at Purva Aspire would be an experience to own as it comes with:

- Intelligent Biometric Security
- Intelligent Lighting & Cooling
- Intelligent Motion Sensors
- Intelligent Master Command for all Smart Appliances
- Last Mile Fibre Optic Infrastructure
- Hands-free Entertainment with Google Home¹
- Get Answers from Google Home¹
- One Voice Command for Multiple Actions via Google Home¹
- Wi-fi Boosters to Enhance Intra-home Connectivity
- 24/7 Remote Connectivity to your Home from anywhere in the World.
- Intelligent Home Controls by Voice & BluNex™ App



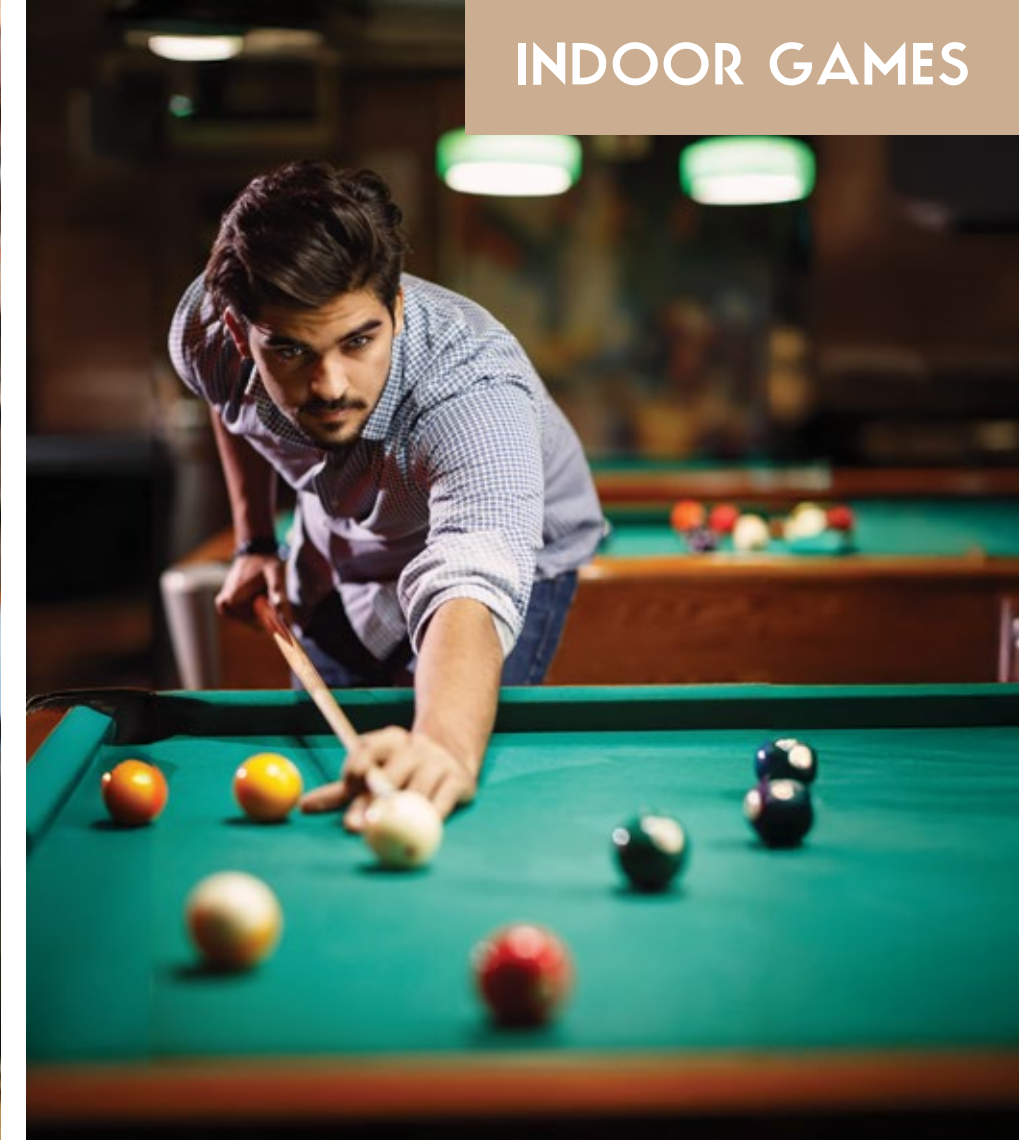
AMENITIES THAT
KEEP YOU HALE
& HEARTY. NOW
THAT'S SMART
THINKING.



MULTI-PURPOSE HALL



LIBRARY



INDOOR GAMES



GYM



SWIMMING POOL

This image is an artists rendering of the project and surrounding views, and does not represent actual views or appearance/facade of the project once complete. No photos have been shot at site. Photos of furniture, fittings, fixtures, and equipment are representative and are not part of project specifications.



LIVE SEAMLESSLY.

Tech Parks/SEZs

- Hinjewadi IT Park
- Prabhatee Tech Park
- Nano Space IT Park
- Pune IT Park
- Oracle

Other landmarks include:

Schools

- Ryan International School
- Periwinkle English Medium
- Sri Sri Ravishankar
- Oxford International

Colleges

- Suryadatta College Of Management Information
- Indian Institute of Cost and Management Studies
- Vasantdada Patil Institute Of Engineering
- Indsearch
- Indira Group

Medical Facilities

- Chellaram Hospital - Diabetes Care & Multi Speciality
- Bavdhan Medicare Centre
- Tirupati Hospital
- Asian Speciality Hospital
- Lopmudra Polyclinic & Diagnostics Center

Shopping

- Aditya Shagun Mall
- Bagfull
- Reliance Mall
- Pavilion

Star Hotels & Resorts

- Sayaji Hotels
- The Gateway
- Radisson Blu
- United 21
- J.W. Marriott
- Ambrosia Spa & Resort

Connectivity

- Pune Railway Station
- Pune Airport

LOCATION MAP

MAP NOT TO SCALE AND INDICATIVE



Bavdhan Advantages >>



TYPICAL UNIT PLANS

2BHK Grand



Unit Type	Indicative RERA Carpet Area (Sq.m)	Indicative Usable Area (Sq.m)	Indicative Super Built Up Area (Sq.m)
2 BHK-Grand	~66.84	~76.88	~109.64

Unit Type	Indicative RERA Carpet Area (Sq.ft)	Indicative Usable Area (Sq.ft)	Indicative Super Built Up Area (Sq.ft)
2 BHK-Grand	~719	~828	~1,180

Areas mentioned herein are approximate and shall vary based on selected apartments. Common Areas/Lobbies and Window placements may vary based on selected floor. Images is for representation purpose only. usable area includes balcony/terraces/garden area wherever applicable

2BHK Luxe



Unit Type	Indicative RERA Carpet Area (Sq.m)	Indicative Usable Area (Sq.m)	Indicative Super Built Up Area (Sq.m)
2 BHK-Luxe	~71.45	~90.69	~124.60

Unit Type	Indicative RERA Carpet Area (Sq.ft)	Indicative Usable Area (Sq.ft)	Indicative Super Built Up Area (Sq.ft)
2 BHK-Luxe	~769	~976	~1,341

Areas mentioned herein are approximate and shall vary based on selected apartments. Common Areas/Lobbies and Window placements may vary based on selected floor. Images is for representation purpose only. usable area includes balcony/terraces/garden area wherever applicable

TYPICAL UNIT PLANS

3BHK Grand



Unit Type	Indicative RERA Carpet Area (Sq.m)	Indicative Usable Area (Sq.m)	Indicative Super Built Up Area (Sq.m)
3BHK-Grand	~91.40	~107.08	~151.39

Unit Type	Indicative RERA Carpet Area (Sq.ft)	Indicative Usable Area (Sq.ft)	Indicative Super Built Up Area (Sq.ft)
3BHK-Grand	~984	~1,153	~1,630

Areas mentioned herein are approximate and shall vary based on selected apartments. Common Areas/Lobbies and Window placements may vary based on selected floor. Images is for representation purpose only. usable area includes balcony/terraces/garden area wherever applicable

3BHK Luxe



Unit Type	Indicative RERA Carpet Area (Sq.m)	Indicative Usable Area (Sq.m)	Indicative Super Built Up Area (Sq.m)
3BHK-Luxe	~91.38	~134.95	~167.69

Unit Type	Indicative RERA Carpet Area (Sq.ft)	Indicative Usable Area (Sq.ft)	Indicative Super Built Up Area (Sq.ft)
3BHK-Luxe	~984	~1,453	~1,805

Areas mentioned herein are approximate and shall vary based on selected apartments. Common Areas/Lobbies and Window placements may vary based on selected floor. Images is for representation purpose only. usable area includes balcony/terraces/garden area wherever applicable

PURAVANKARA PROJECTS IN WEST



PURVA SILVERSANDS
KESHAV NAGAR, MUNDHWA, PUNE



PROVIDENT PALM VISTA
SHILPHATA, NAVI MUMBAI



PURVA ASPIRE
BAVDHAN, PUNE



PURVA EMERALD BAY
MUNDHWA, PUNE



PURVA CLERMONT
CHEMBUR, MUMBAI

PURVA ALWAYS ABOUT YOU

With over 49 years, Puravankara has crafted a legacy that's all about you. With its headquarters in Bengaluru, it stands on the pinnacle of India's real estate landscape. Puravankara homes are celebrated for their luxury and inspiration drawn from the most beautiful places worldwide, and they are cherished by thousands across 9 cities. Our legacy thrives on delivering excellence, often ahead of schedule, driven by advanced construction and innovative technology. At Puravankara, our sole focus is on our customers, their needs, dreams and aspirations. We call this 'The You Philosophy'.

49

YEARS OF
ESTATE EXPERIENCE

9

INDIAN CITIES

86+

ICONIC PROJECTS

48500+




HOMES
DELIVERED

2.0 L+

HAPPY FAMILIES

PURAVANKARA

Puravankara Limited, 130/1, Ulsoor Road, Bangalore – 560042

The images used are only indicative   

+91 80 44 55 55 55 / 1860 208 0000 Web: www.puravankara.com Mail: sales@puravankara.com

Call:

This project is financed by Piramal Capital & Housing Finance Ltd.

PROJECT IS FUNDED BY
AND MORTGAGED WITH

TATA CAPITAL
HOUSING FINANCE LIMITED

Home loans are brought to you by
Tata Capital Housing Finance Limited and are at their sole discretion.
Terms and conditions apply.

Project financed by Tata Capital Housing Finance Limited. *T&C Apply. The imagery used in the brochure is indicative of style only. The photographs of the interiors, surrounding views and location may have been digitally enhanced or altered and do not represent actual or surrounding views. Standard fittings and finishes are subject to availability and vendor discretion. The images shown in the brochure are not standard and will not be provided as a part of an apartment. The information contained herein is believed to be true but not guaranteed. The colours of the buildings are indicative. This is a reference document intended only to provide generic information and does not constitute an offer or contract.

The Project has been registered via MahaRERA registration number: P52100017650 and is available on the website <https://mahare-ra.mahaonline.gov.in> under registered projects.

SCAN THE QR CODE

