



MahaRera Registration numbers  
**P52100026132**  
<https://maharera.maharashtra.gov.in>



**PURAVANKARA**



PRESENTING

**THE GREAT  
HOME  
CARNIVAL**

LAUNCHING

CODENAME

**MISSING LINK**

📍 KESHAV NAGAR, PUNE



# PURAVANKARA

## ==== A LEGACY OF TRUST ====

For over 50 years, Puravankara has delivered homes that blend design, quality, and foresight. We're building more than homes. We're shaping the future.



Presence Across  
India's 9 Cities



86+ Completed  
Projects



2 Lakh +  
Happy Residents



51+ Million Sq. Ft.  
Developed

# A LEGACY OF EXCELLENCE



Trust And  
Transparency



Strong Corporate  
Governance



Pioneer In Theme  
Based Developments



NSE-BSE  
Listed

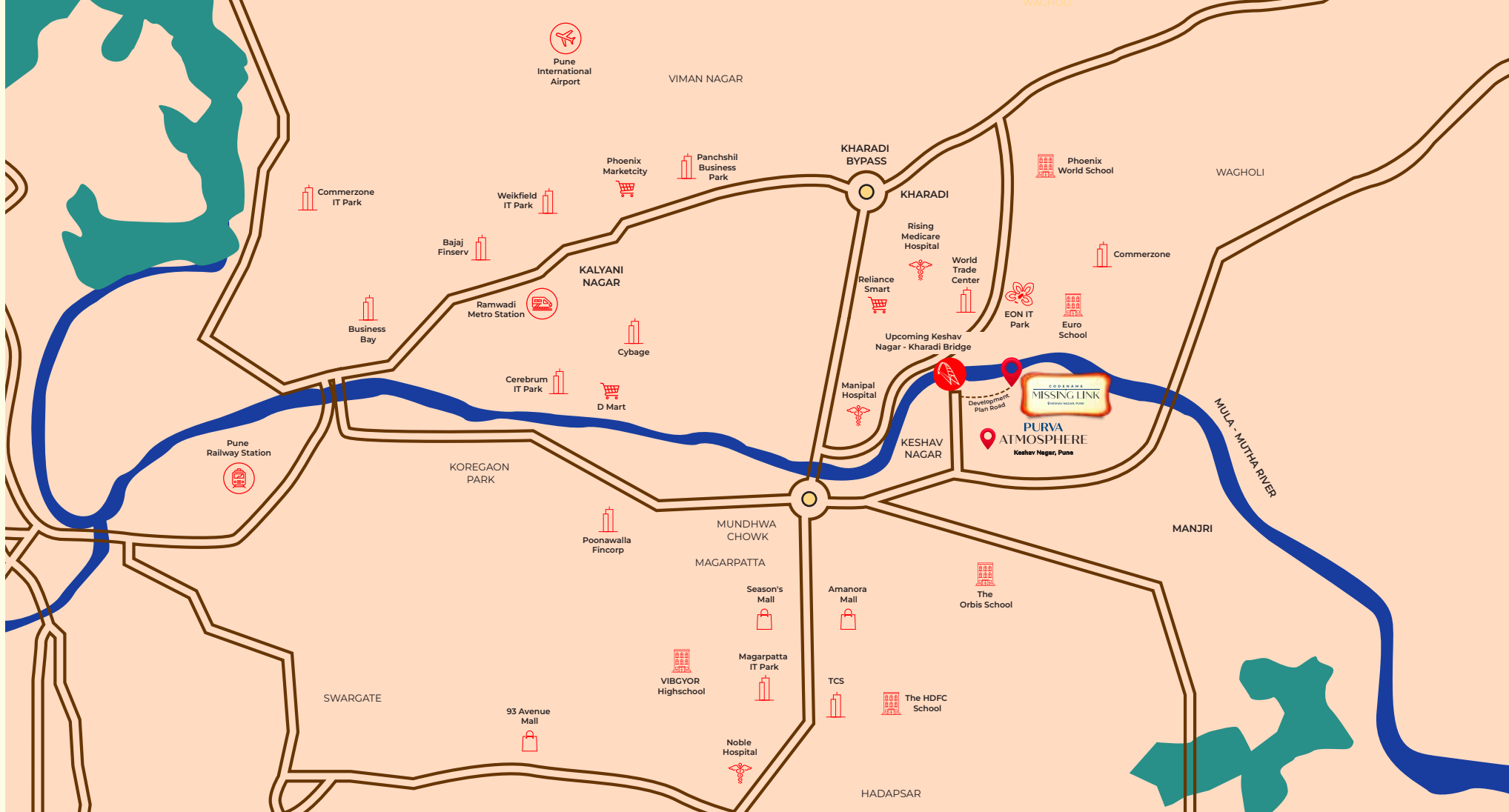


## WHY KESHAV NAGAR IS BECOMING PUNE'S LIFESTYLE ADDRESS

Positioned between Kharadi's fast-paced business ecosystem and Koregaon Park's lifestyle culture, Keshav Nagar is rapidly emerging as one of East Pune's most strategically connected destinations. And with the upcoming Keshav Nagar-Kharadi bridge expected to transform accessibility across the corridor, everything is about to move closer than ever.

- ◆ Closer to work.
- ◆ Closer to lifestyle hubs.
- ◆ Closer to convenience.
- ◆ Closer to opportunity.

This isn't just a well-connected location. It's the connectivity link East Pune has been waiting for.



**Connectivity boost with Kharadi Bridge:**

Upcoming bridge to drastically cut travel time across East Pune.



**Price edge over Kharadi:**

More attractive rates make Keshavnagar a smart investment.



**Schools:**

- Orbis School - 2.3 km
- Dhole Patil Junior College - 5.5 km



**Neighbourhood:**

- Kalyani Nagar - 6.4 km
- Koregaon Park - 6.8 km



**Shopping:**

- Amanora Mall - 3.5 km
- Seasons Mall - 3.5 km



**Hotels:**

- Radisson - 5.5 km
- Westin - 5.8 km



**Business Park:**

- WTC - 5 km
- Poonawala Fincorp - 4.3 km
- EON IT Park - 6.5 kms
- Commerzone - 7.5 kms



Actual view from the tower

# THE MISSING LINK BETWEEN EVERYDAY LIVING AND EXTRAORDINARY LIVING.

Bask in the glow of beachside-inspired luxury at this 19-acre beach paradise. From infinity pools to sunken bars, experience a life of ease and elegance in a destination crafted for those who seek the extraordinary.



19 Acres  
Of Beach Lifestyle



Mesmerizing  
Views From All Apartments



7 Acres  
Open Spaces



4 Apartments  
Per Floor



Ready To Use  
Amenities



3 Acres Dedicated  
Only For Amenities



Expansive  
180°+ Views



3 Private Decks  
For Big Apartments



Flourishing community  
of 650+ families



22+ Best-In-Class  
Amenities



Vastu Compliant  
Homes



Ample  
Parking



Wooden Flooring  
In Master Bedroom

THE MISSING LINK BETWEEN  
WHERE YOU ARE AND  
WHERE YOU WANT TO BE.



C O D E N A M E

---

MISSING LINK

📍 KESHAV NAGAR, PUNE

SOMETIMES LIFE DOESN'T NEED MORE.  
IT JUST NEEDS BETTER CONNECTIONS.

A BETTER CONNECTION



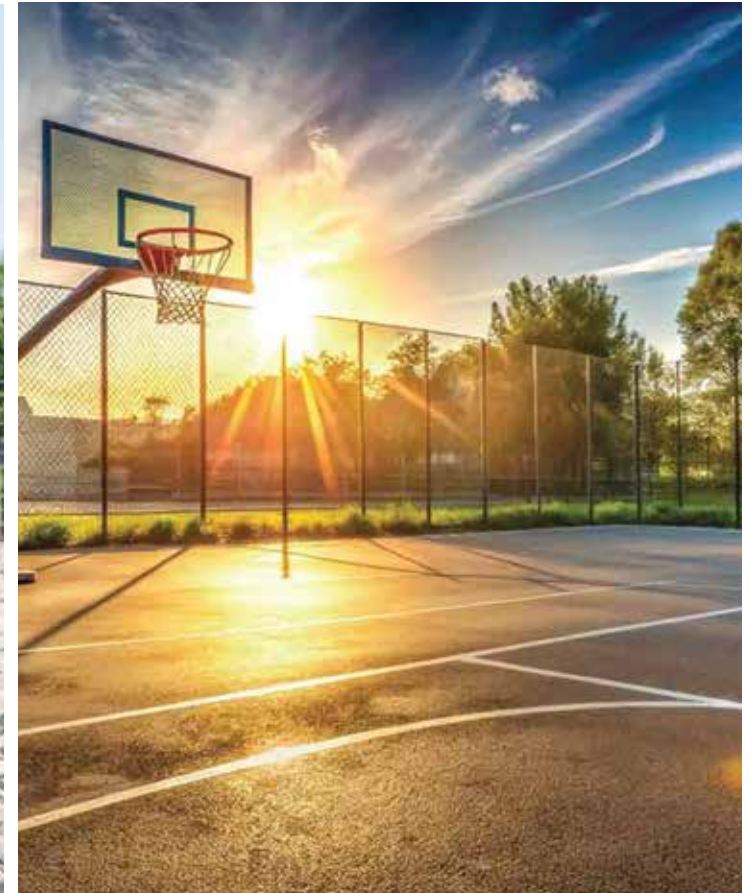
TO EXPERIENCES. > TO WORK. > TO LEISURE. > TO NATURE.



TO CONVENIENCE. > TO THE PEOPLE YOU LOVE.

## BEACH AMENITIES

- Wave Pool
- Fish Feeding Deck
- Snorkeling
- Koi Pond
- Sunken Bar
- Barbecue Party Deck



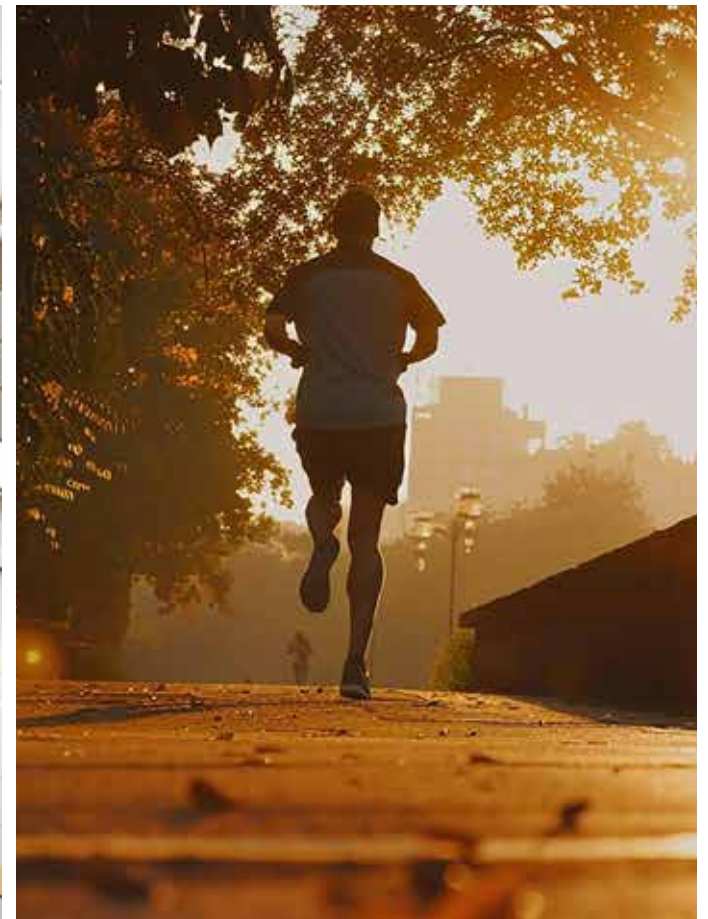
## SPORTS AMENITIES

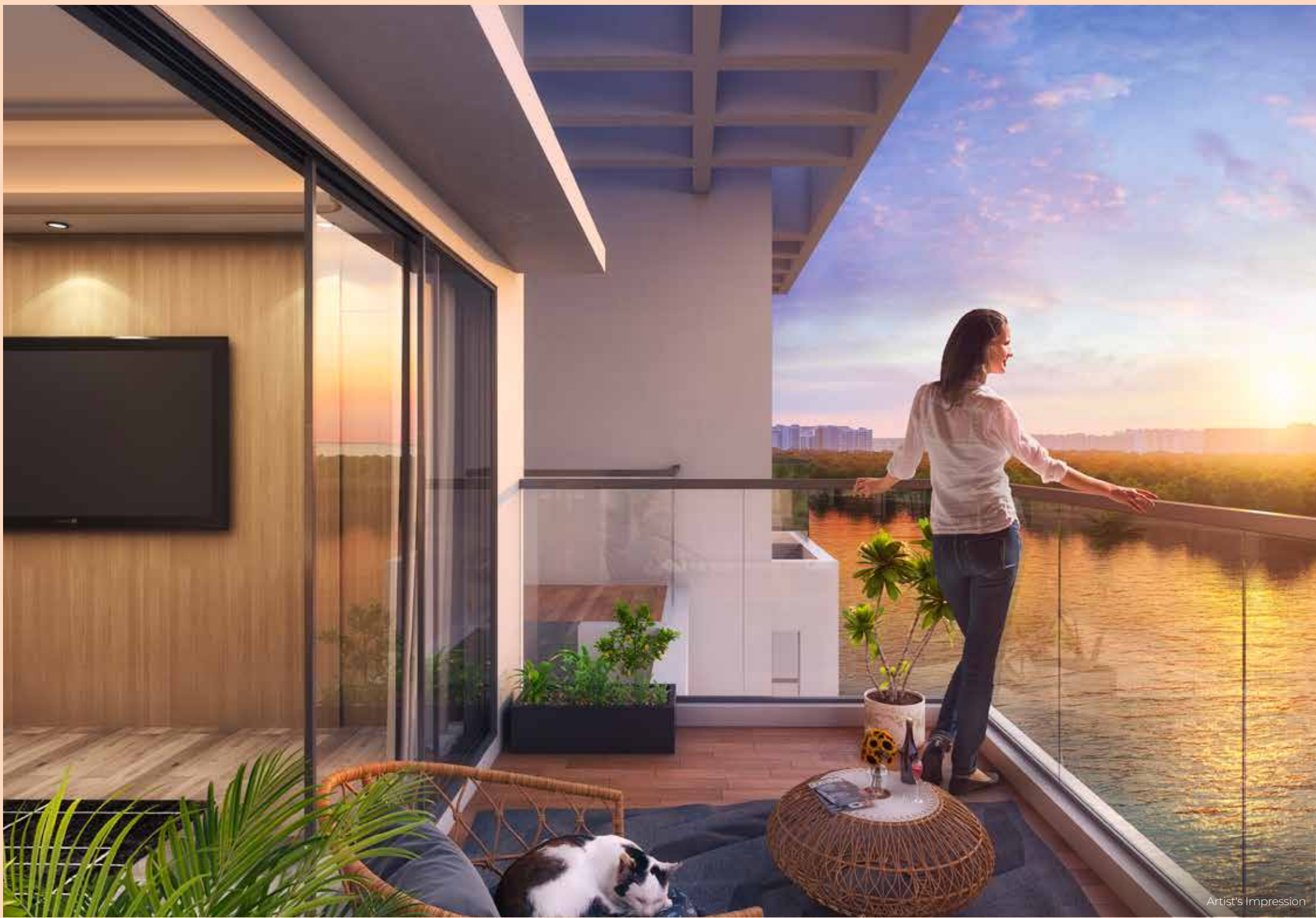
- Cricket Practice Pitch
- Basketball Post
- Golf Putting Green



## HEALTH & FITNESS AMENITIES

- Jogging Track
- Yoga Room
- Meditation Pavilion
- Multi-Gym





---

Secure your advantage with:

---



Guaranteed  
EOI benefits



Air-conditioned  
homes



Spin the wheel  
mega offers



Choose  
your EMI

With all approvals in place and construction in full swing,  
there's never been a better time to make your move.

---

Carpet Areas:

---

**2 BHK: 669+ sq. ft.**  
**( 62.18 sq.m)**

**3 BHK: 1075+ sq. ft.**  
**(99.90 sq.m)**

**4 BHK: 1338.6 sq. ft**  
**(124.36 sq.m)**

Secure your advantage before prices rise.

# PURAVANKARA



JV with  
**OXFORD GROUP**  
A Promise!

Disclaimer: Codename Missing Link is the marketing name of a new tower at Purva Emerald Bay. The purpose of this brochure/booklet/prospectus/advertisement is to indicate to the customers, the range of the amenities and facilities that may come up in the project, as per the present approved layout. The stock images and features shown and/or mentioned and the image renders used herein are indicative and promotional and may differ from actuals. External views may vary basis the apartment location. Products, features, furniture, light fittings, etc., shown are illustrations and for representation only and are not part of the flat to be sold to the customer. The colours, shades, patterns on walls, tiles etc. shown in the images are for the purpose of representation only and may vary upon actual construction. The representation of plants / trees / plantation/ flowers is shown as fully grown in healthy conditions. The growing time of the plantation may vary depending upon the type and species. Upcoming developments are indicative and are to be developed by appropriate authorities. Map not to scale. The information has been taken from the internet. This is only an invitation to offer and does not constitute an offer. Any prospective sale shall be governed by the terms, and Agreement for Sale to be entered into between the parties. Before making a decision to purchase, you are requested to independently, either directly or through your legal/financial advisor, thoughtfully verify all details/documents pertaining to the project. T&C apply.